

WELCOME TO

BARRIO

Terrence

HOTEL



Terreno

destape



TERRENO
BARRIO
HOTEL

BARRIO
Terreno
HOTEL

77

1 **CONCEPT**

2 **BARRIO**

3 **HOTEL**

4 **ROOMS**

5 **OUTLETS**

1

CONCEPT



CLUB

SHOP

MISTRAL

TERRENO

IS PART
OF THE BARRIO

THE BARRIO

IS PART
OF TERRENO

TERRENO BARRIO HOTEL

Some places in the world have a certain “je ne sais quoi”—something that can only be felt. A power of attraction and charm that simply draws you to them. One of these magical places is the “barrio” (neighbourhood) of El Terreno.

Located between the Mediterranean Sea and an ancient pine forest, this barrio has been a summer retreat for the middle class, aristocrats and the cream of bohemian society in Europe since the days of “Spain is different”.

But today, El Terreno is, above all, a barrio. And this hotel—more than just a hotel—is that barrio.



2

BARRRIIO

AV. JOAN MIRÓ 73-75

**IN THE HEART OF
THE REBORN BARRIO
OF EL TERRENO**



5 Kilms.
HOTEL
BON SOL

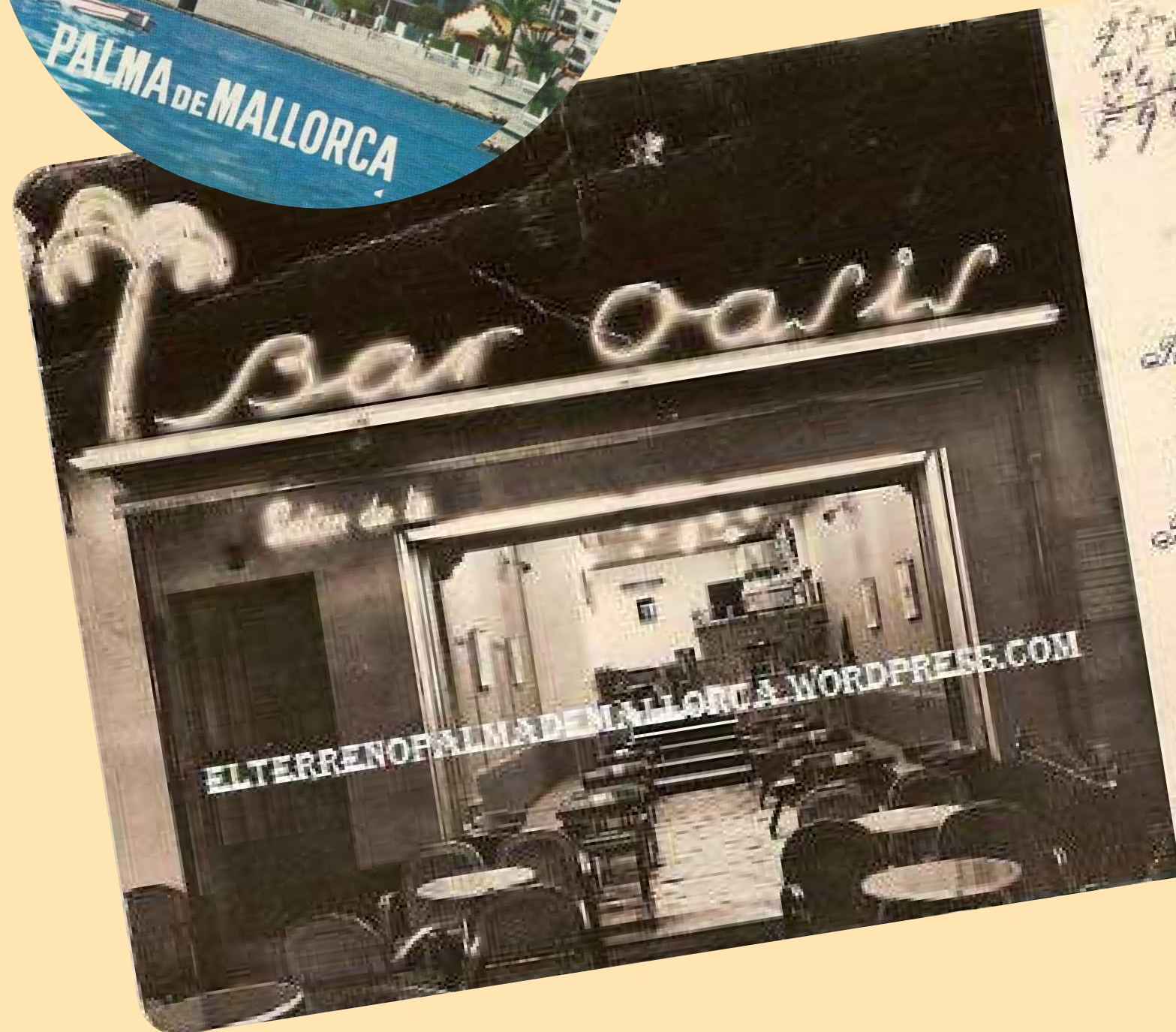
ABOVE THE BEACH
OF ILLETAS

BIBETA CAS CRILL

LENDING LIBRARY

Grand
FILM

Casa
Planas



450
360
590
ee

Plaza Suroeste 4
(El Escriano)
Teléfono 1045
Palma de Mallorca

ee



A prime location between the Seafront Promenade and Bellver Park, where a calm residential atmosphere meets cosmopolitan life. A strategic setting that combines history, culture, nature and the sea.

The barrio is witnessing a transformation, with new signature restaurants, art galleries and a vibrant social scene with a bohemian spirit.

Well-connected with public transport and parking.

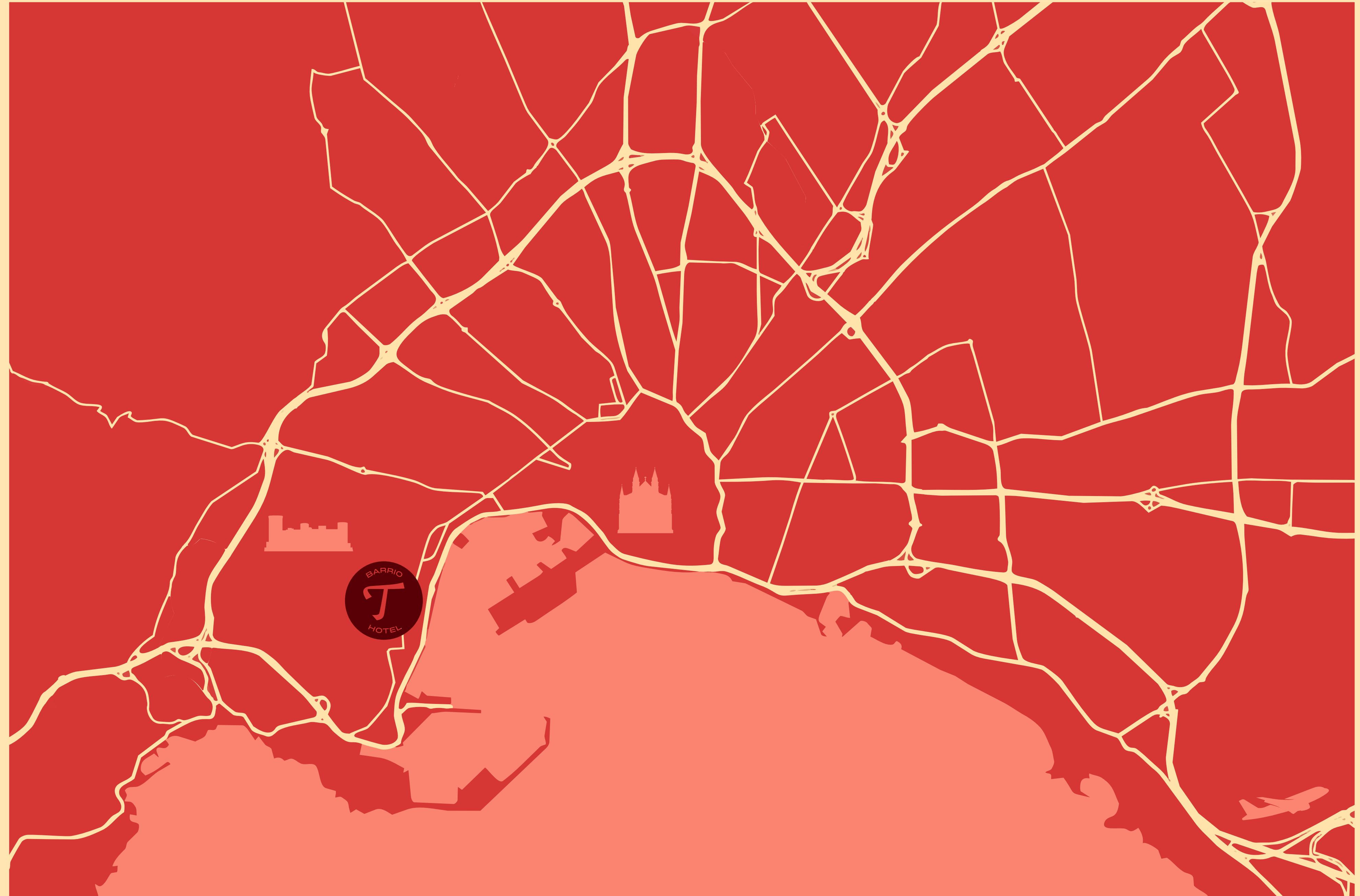
AV. JOAN MIRÓ 73–75

Seafront Promenade  5'

Old Town  5'  20'

Cathedral  5'  20'

Airport  20'



3

HOTTELL

Terreno Barrio Hotel offers **41 rooms** spread across **two buildings** that complement each other: the **old building**, which **embodies the past** and bohemian history of El Terreno, and the **new building**, which envisions a future of wellness, culture and a contemporary way of experiencing the city.

The entire complex has been designed from a **contemporary and sustainable approach to architecture**, deeply tied to its surroundings. It also boasts **PASSIVHAUS** and **LEED Platinum** certifications, leaders in energy efficiency and conscious design.



OLD BUILDING
AV. JOAN MIRÓ 73

NEW BUILDING
AV. JOAN MIRÓ 75

OLD BUILDING

THE PAST THAT INSPIRES US

73

This building features **21 rooms**, with a **distinct design on each floor** that honours the barrio's artistic spirit and bohemian energy. On the **rooftop**, a **sky bar** with **views of the sea and Bellver Castle** invites you to enjoy the sunset over the Bay of Palma. At street level, **DESTAPE**—a restaurant and bar with **spacious outdoor seating**—serves signature Mediterranean dishes and **breakfast** in a bright setting. A nearby **public green space** serves as a meeting spot for guests and locals alike, thus strengthening community ties.

KEY FACILITIES

1. 21 rooms with a distinct design on each floor.
2. Rooftop bar overlooking the sea and Castle Bellver.
3. **DESTAPE**, and bar/restaurant with outdoor seating.
4. Breakfast service.



NEW BUILDING**THE FUTURE WE ENVISAGE**

75

With **20 rooms**, this building expands the experience with facilities **designed around wellness, culture and flexible working: a cafeteria, wellness zone with a gym, spa with heated pool, hammam and massage parlour**; there's also a **co-working space, meeting room** and a **pop-up art gallery**. The social spaces include both an **indoor cinema** and an **outdoor cinema**. On top of the building, a **rooftop pool** offers an intimate atmosphere with **stunning views**. All this embodies the **future** of the project: next-gen hospitality, passive energy systems and **sustainability standards** that reduce environmental impact and improve comfort.

KEY FACILITIES

1. 20 rooms, all with a balcony.
2. Terreno Cafeteria.
3. Wellness: gym with outdoor calisthenics area, spa with heated pool, hammam and massage parlours.
4. Co-working **space** and meeting room.
5. **Pop-up** art gallery.
6. **Indoor cinema** and **outdoor cinema**.
7. **Rooftop pool**.



4

ROOMS

TYPES OF ROOMS

All types of rooms can be made twin rooms (two individual beds) on request.

We accept groups. The hotel has 41 rooms (21 in the old building and 20 in the new building), ideal for blocks of several rooms.

ESSENTIALS

1. Air conditioning and soundproof rooms with blackout curtains.
2. Private bathroom with a shower, hairdryer and G19 Organics eco-friendly toiletries.
3. Safe box and desk/writing space.
4. Smart TV (43" or 52" depending on room type).
5. Free Wi-Fi in rooms.
6. Coffee maker in room.
7. Minibar with built-in radio.
8. Fridge in room.
9. Parking available (advance booking, subject to availability).

TERRENO DELUXE SUITE WITH TERRACE

Our premium suite: private terrace with a **freestanding outdoor bath**, designed for relaxing in the open air under the El Terreno sky.



BELLVER JUNIOR SUITE WITH TERRACE

Inside meets outside with a **private terrace** designed for enjoying the peaceful and sunny barrio.



DELUXE DOUBLE WITH BALCONY

In the new building, **spacious room with a balcony**; the sofa pulls out into a bed for a child (<6 years).



SUPERIOR DOUBLE WITH BALCONY

Also in the new building; **bright and balanced** room with a **private balcony**.



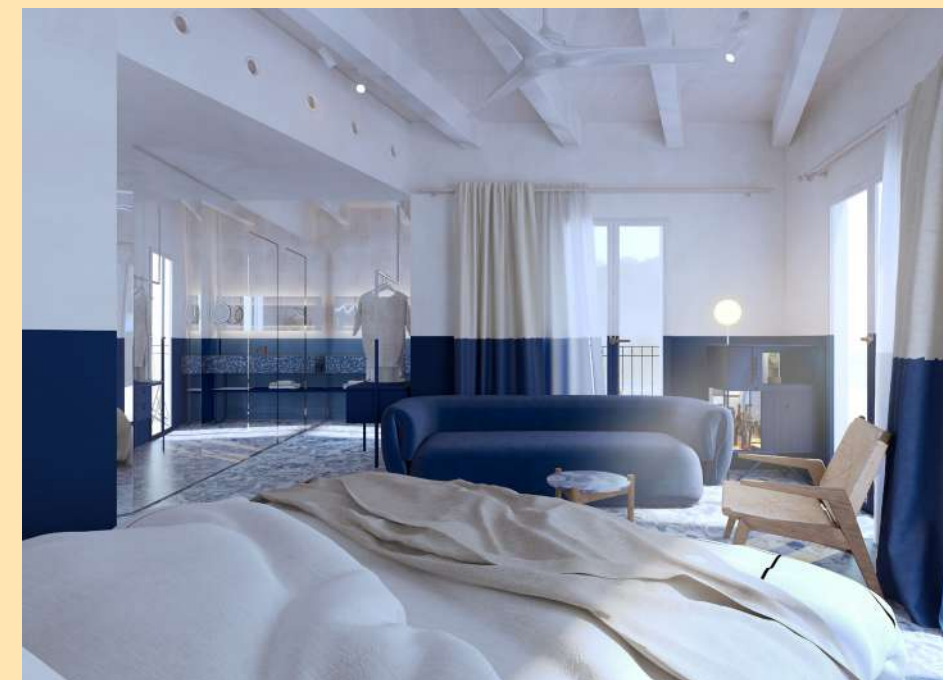
GOMILA SUITE WITH BATH

Suite designed with rest in mind, with a **freestanding bath** and relaxing atmosphere.



JUNIOR SUITE WITH BALCONY

Private balcony and views of Gomila; ideal for its spaciousness and natural light.



BARRIO DOUBLE

In the old building; **more space and character** to experience the barrio from inside.



STANDARD DOUBLE

In the old building; views of the barrio and **authentic charm** combined with modern comforts.



73

TERRENO DELUXE SUITE WITH TERRACE

Our premium suite: private terrace with a **freestanding outdoor bath**, designed for relaxing in the open air under the El Terreno sky.

Units	1
Interior	34.98 M ²
Private terrace	34.83 M ²
Capacity	2 (+1 child under 16)
King bed	180–200 CM
Pillows	4 (2 memory foam + 2 feather)
Separate living room	1
Outdoor bath on terrace	1
Sundeck	1



PERKS

BATHROOM

- G19 ORGANICS complete set (shampoo, conditioner, shower gel, body milk/scrub)
- Hairdryer
- 600gsm towels (body, hands, face)

COFFEE & MINIBAR RADIO

- Nespresso + 2 cups
- Maxibar
- Snacks
- Minibar selection

ELECTRIC MOTORCYCLE

- (1/suite)
- Helmet and lock
 - Limited km and deposit

PRIVATE TRANSFER

Airport–El Terreno (round-trip)

PERSONAL HOST

via WhatsApp, with priority bookings at Destape and 2 Rombos Club

BREAKFAST TO ORDER

served in the suite/terrace

WELCOME GIFT

Destape selection

PREMIUM MINIBAR

- 1 daily soft drink refill
- 1 “signature” bottle

EARLY CHECK-IN

priority

LATE CHECK-OUT

subject to availability until 13:00

UPGRADED AMENITIES

- Beauty kit
- Bubble bath/salts
- Premium bathrobe

73

GOMILA SUITE WITH BATH

Suite designed with rest in mind, with a **freestanding bath** and relaxing atmosphere.



Units	1
Interior	48.82 M ²
Capacity	2 (+1 child under 16)
King bed	180—200 CM
Pillows	4 (2 memory foam + 2 feather)
Living room	1
Indoor bath	1

PERKS

BATHROOM

- G19 ORGANICS complete set (shampoo, conditioner, shower gel, body milk/scrub)
- Hairdryer
- 600gsm towels (body, hands, face)

COFFEE & MINIBAR RADIO

- Nespresso + 2 cups
- Maxibar
- Snacks
- Minibar selection

ELECTRIC MOTORCYCLE

- (1/suite)
- Helmet and lock
 - Limited km and deposit

PERSONAL HOST

via WhatsApp, with priority bookings at Destape and 2 Rombos Club

PREMIUM MINIBAR

- 1 daily soft drink refill
- 1 “signature” bottle

EARLY CHECK-IN

priority

LATE CHECK-OUT

subject to availability until 13:00

UPGRADED AMENITIES

- Beauty kit
- Bubble bath/salts
- Premium bathrobe

BELLVER JUNIOR SUITE WITH TERRACE

73

Inside meets outside with a **private terrace** designed for enjoying the peaceful and sunny barrio.

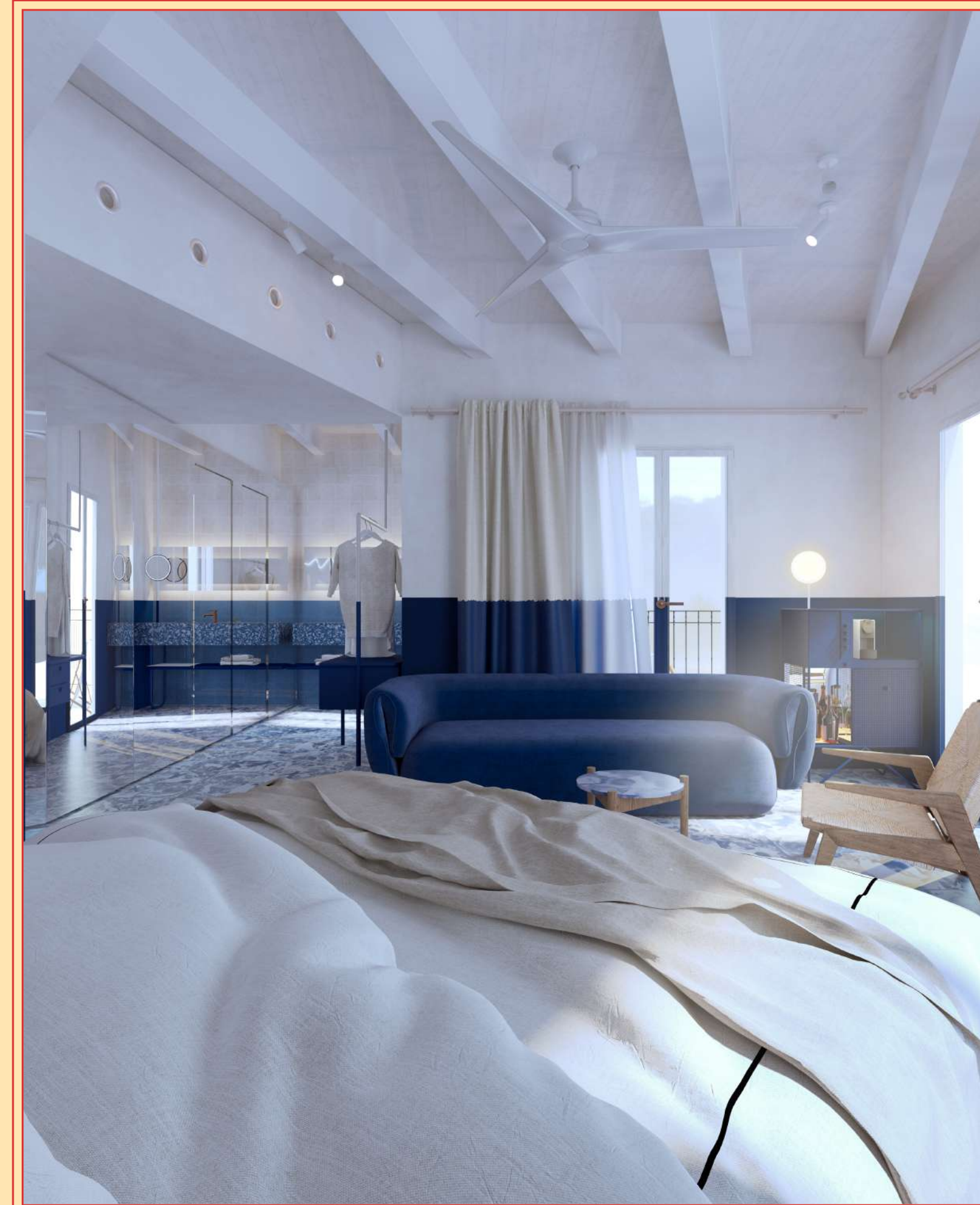


Units	4
Interior	30.81 M ²
Model with balcony	10.66 M ²
Capacity	2
King bed	180–200 CM
Pillows	4 (2 memory foam + 2 feather)
Living room	1
Private terrace	1
Bellver views	

BELLVER JUNIOR SUITE WITH BALCONY

73

Private balcony and views of Gomila; ideal for its spaciousness and natural light.



Units	1
Interior	43.7–48.8 M ²
Model with balcony	2.29 M ²
Capacity	2
King bed	180–200 CM
Pillows	4 (2 memory foam + 2 feather)
Living room	1

DELUXE DOUBLE WITH BALCONY

75

In the new building, **spacious room with a balcony; the sofa pulls out into a bed** for a child under 6.



Units	17
Interior	27–32 M ²
Model with balcony	~2 M ²
Capacity	2
King bed	180–200 CM
Twin bed	In some models
Pillows	4 (2 memory foam + 2 feather)
Balcony	1
Double shower	In some models

SUPERIOR DOUBLE WITH BALCONY

75

Also in the new building; **bright and balanced room with a private balcony.**



Units	3
Interior	25–32 M ²
Model with balcony	~2 M ²
Capacity	2
King bed	180–200 CM
Twin bed	In some models
Pillows	4 (2 memory foam + 2 feather)
Balcony	1
Double shower	In some models

BARRIO DOUBLE

73

In the old building; **more space and character** to experience the barrio from inside.



Units	11
Interior	20–28 M ²
Capacity	2
King bed	180–200 CM
Pillows	4 (2 memory foam + 2 feather)
Barrio-Hotel Focus	

STANDARD DOUBLE

73

In the old building; views of the barrio and **authentic charm** combined with modern comforts.



Units	11
Interior	20–25 M ²
Capacity	2
King bed	180–200 CM
Twin bed	In some models
Pillows	4 (2 memory foam + 2 feather)

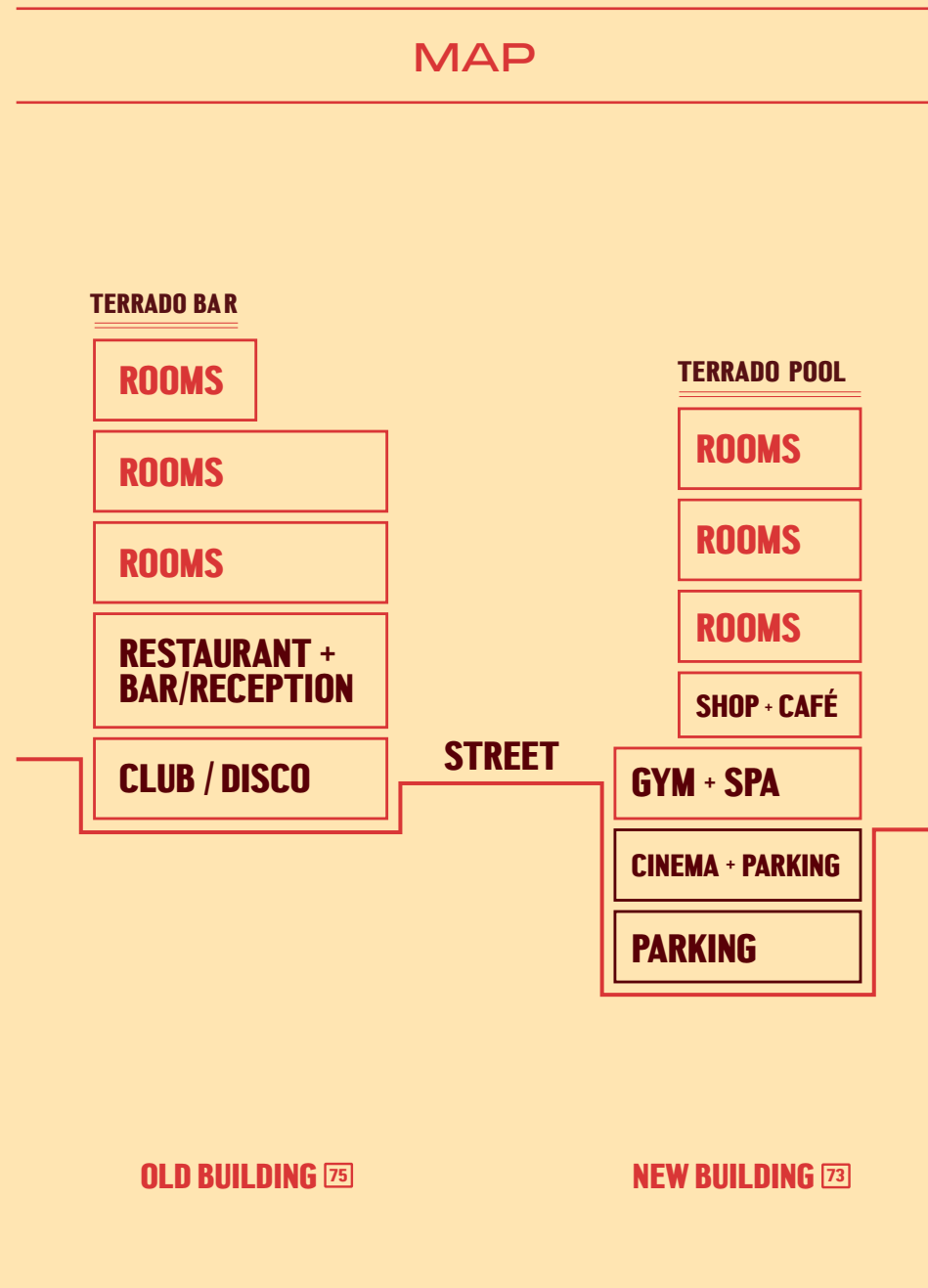
5

OUTLETS

TERRENO'S OUTLETS

Terreno is more than just a hotel. It's a barrio inside the barrio.

A vibrant place, with interconnected spaces for dining and raising a glass, buying local products, being inspired by culture, and getting together to work or celebrate. All with a cosy Mediterranean feel, to be enjoyed with no rush whatsoever, whenever.



TERRENO BREAKFAST 07:30—11:30

Mornings at Terreno are enjoyed with no rush. We serve **breakfast to order** that honours local ingredients and Mediterranean calm.

SPA & GYM OPEN ALL DAY

A space designed for total wellness, offering a peaceful atmosphere for unwinding and relaxing. Guests can enjoy areas for relaxing, on-demand treatments and a well-equipped gym to keep up with their routine during their stay.

SWIMMING POOL 09:00—19:00

The pool at Terreno is a peaceful space for unwinding under the Mediterranean sun. Entry is permitted for guests aged 12 and over. Under 16s must be under adult supervision at all times.



CAFÉ 09:00—17:00

The local café inside our hotel: a specialty in Terrenos, designed as a meeting spot for guests and locals alike. Ideal for casual breakfasts, a spot of work, a quick catch-up, or to recharge energy in between plans.

Groups	40
--------	----



ROOFTOP & POOL BAR EVENINGS

Open-air rooftop with views of the sea and Bellver Castle. Evening meeting spot: Mediterranean cocktails, gentle music and the Palma skyline in the background.

Ideal for after-work activities, micro-events and magical sunsets.

Cocktail reception	80
--------------------	----



BAR/RESTAURANT 19:15—23:30

Signature, local and sustainable cuisine. Terreno's dining table, where Mediterranean ingredients and contemporary techniques set the pace.

Perfect for relaxed lunches and long dinners that finish at the bar. Ideal for couples, special occasions, groups and social events. Private area available. Discover our outdoor terrace!

Imperial	40
Cocktail reception	80



CO-WORKING & MEETING ROOM 08:00—19:00

Spaces with natural light and a Mediterranean feel for blending work and travel. From shared desks to private rooms for meetings or conferences, with the support of hotel staff.

Ideal for remote work, presentations or one-to-one interviews.

There's a kitchen outside for a coffee break or food.

School	30
Imperial	30
Theatre	40
Indoor cocktail reception	60
Outdoor cocktail reception	80



CLUB 22:00—02:00

Our Club is open every night, offering an exclusive experience in an intimate setting with premium cocktails and carefully selected music. A space designed to enjoy with no rush, and let yourself be taken away by Terreno's nightlife.



CINEMA ROOM SEE WEBSITE

Indoor cinema for private screenings, creative showings or audiovisual presentations. A quiet retreat that invites you to switch off the noise and turn on the screen.

Ideal for intimate premieres, audiovisual workshops and team screenings.

The chairs have foldable tables. We have a lighted podium connected to the screen and sound system.

Capacity	40
----------	----

OUTDOOR CINEMA SEE WEBSITE

A truly Mediterranean plan: an outdoor cinema to enjoy warm evenings in the barrio. A chill social experience to round off Terreno's cultural agenda.

Capacity	20
----------	----



SHOP 08:00—19:00

“Made in Terreno” Selection: goods with the soul of local craftspeople and producers, selected for their design and quality. A souvenir to stay connected to the island and the barrio.

STREET

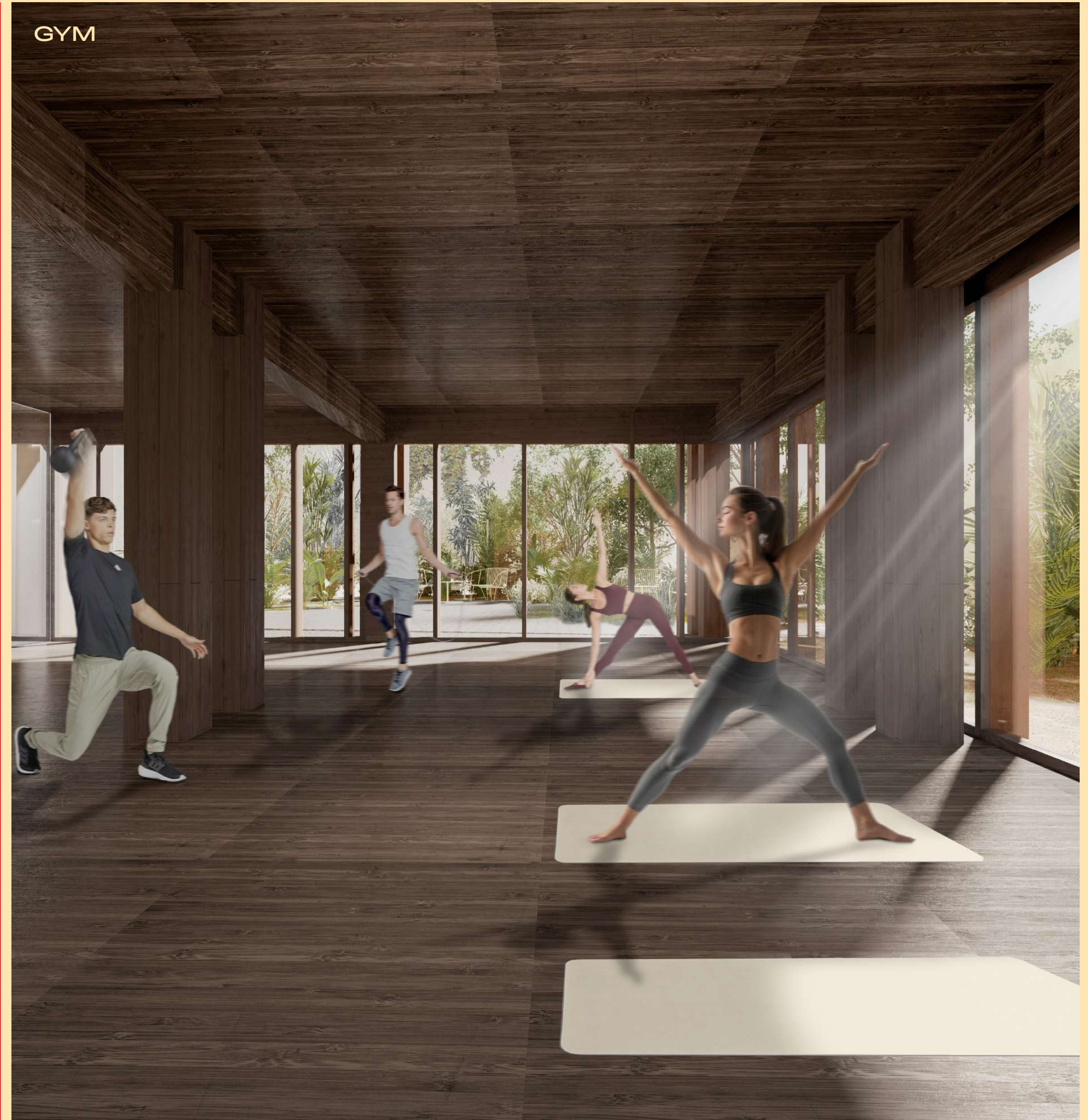




SPA



GYM



ROOFTOP



SWIMMING POOL



CO-WORKING



MEETING ROOM



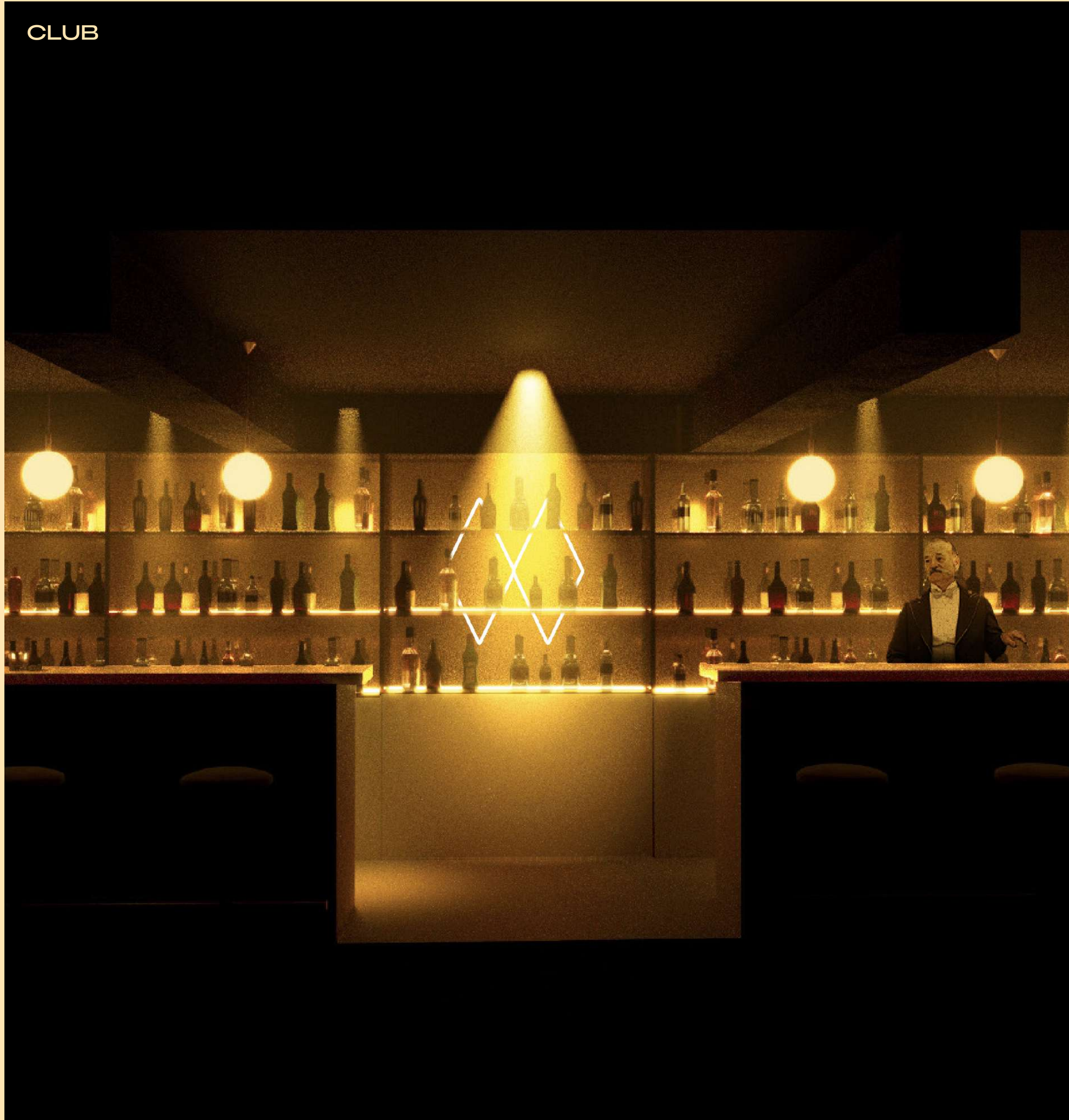
CINEMA ROOM



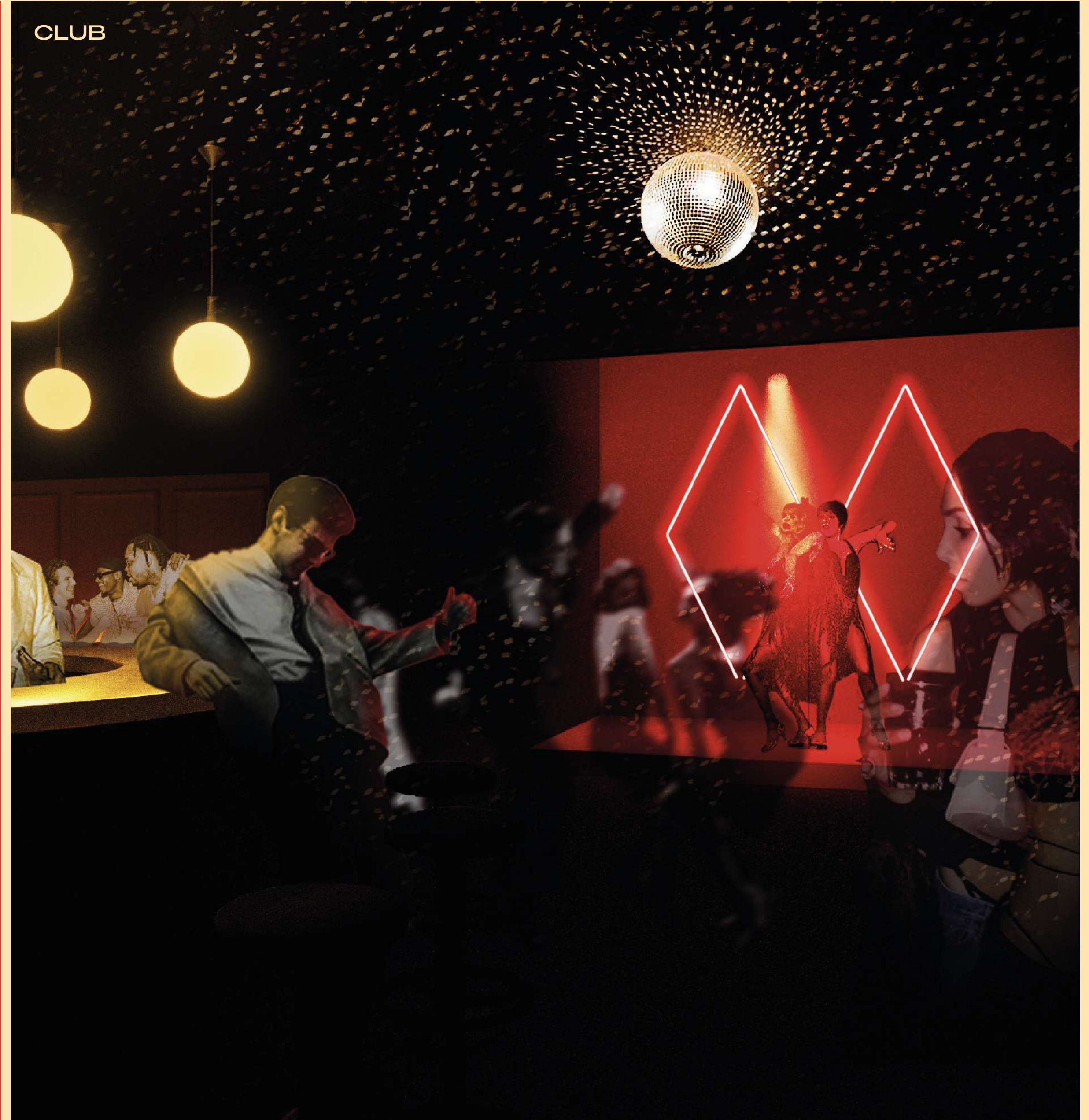




CLUB



CLUB



For any queries, please contact our sales department:
VENTAS@TERRENOHOTEL.COM

BARRIO

Terreneo

HOTEL